

Product details:

Item No.: 825576

Model No.: U13Q

Technical data:

Input: 12V/1.5A

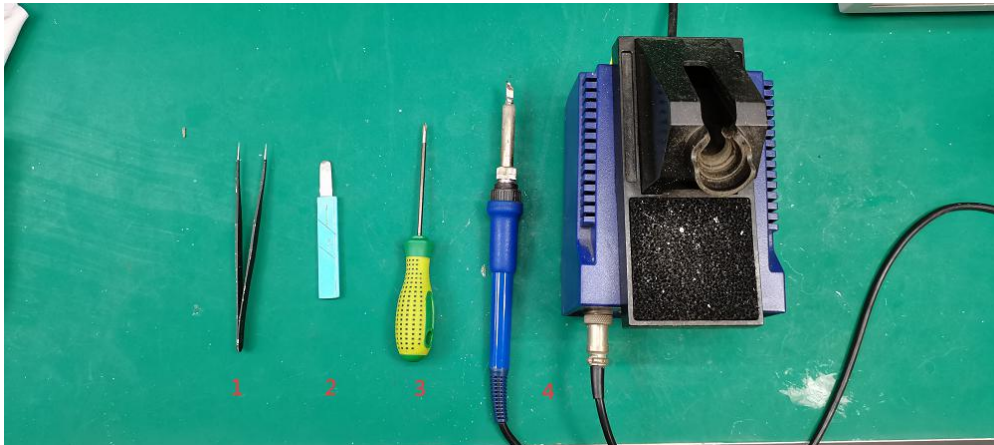
CCT: 3000/4200/5500K

Luminous flux: 500Lm

Lighting power: 8.5W Max.

CRI: 80Ra

Tools list:

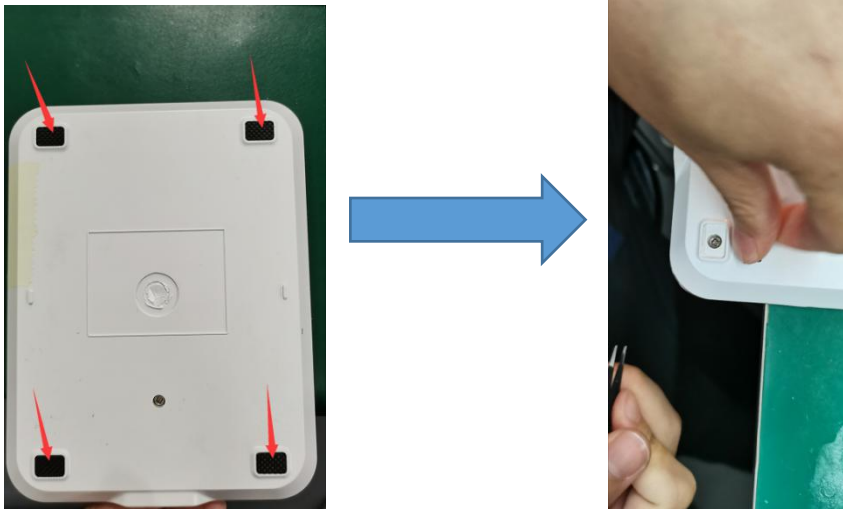


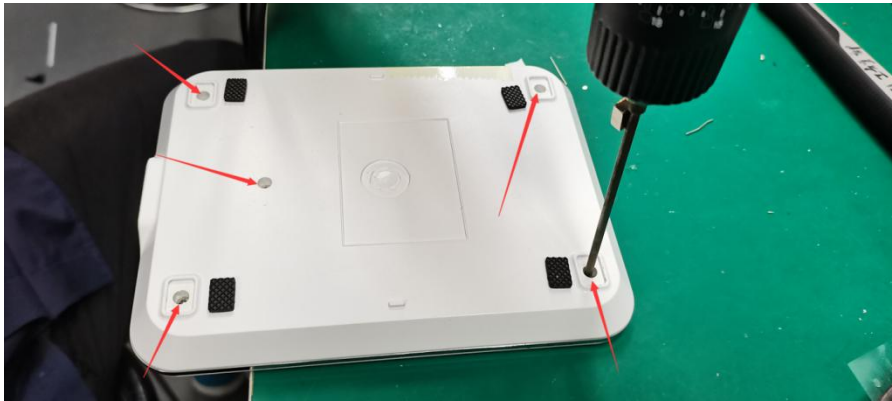
- 1: Tweezers
- 2: Pry piece
- 3: Screwdriver(PH0x75mm)
- 4: Soldering iron

Instructions on how to remove the light source:

Note: Please operate following steps when the product is powered off.

Step1: Remove the 4 foot pads on base with tweezers to expose the position of screws.





Step2: Remove the 5 screws with the screwdriver(PH0x7 5mm).

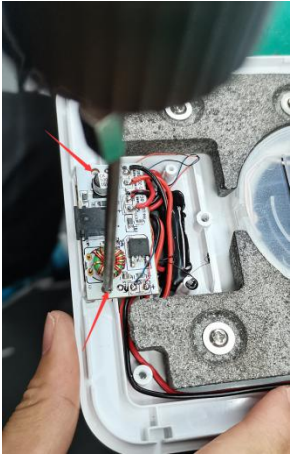


Step3: Pry the shell off directly with the pry piece.

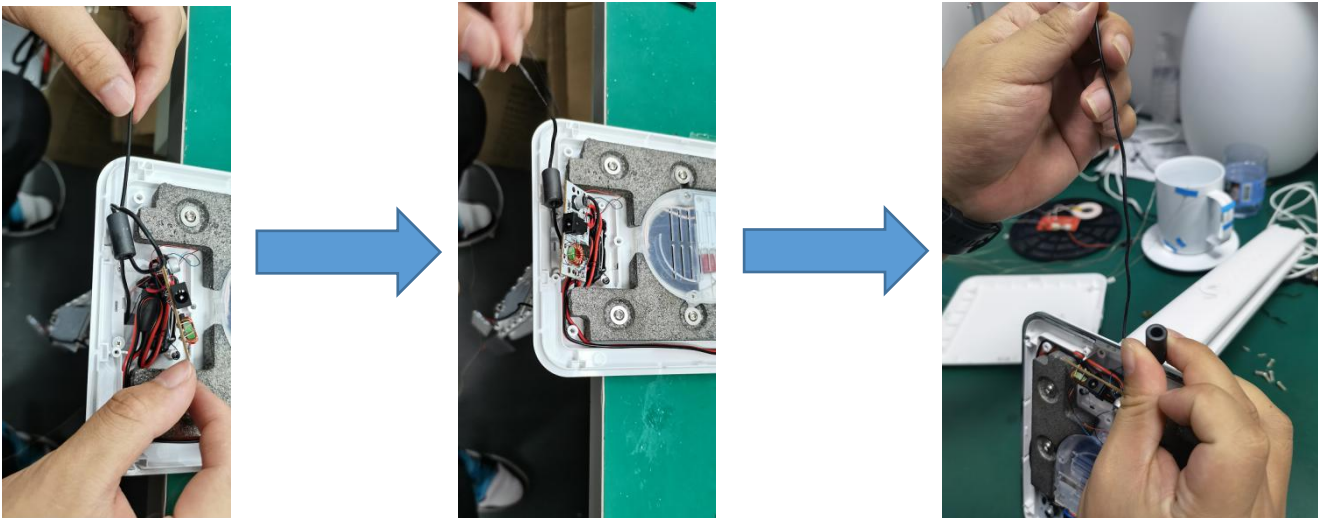
Step4: Use the soldering iron to unsolder the Touch PCB board.



Step5: Remove the 2 screws on DC PCB board with the screwdriver(PH0x75mm).



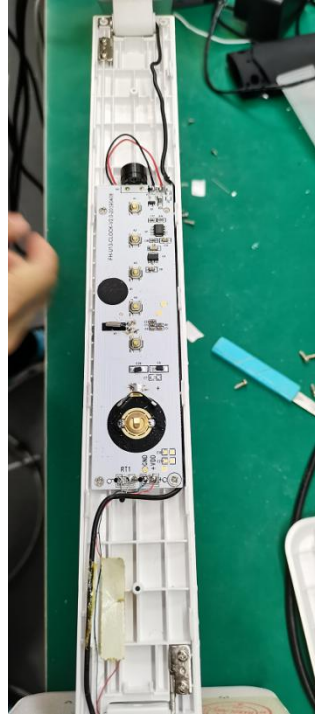
Step6: Straighten the black line and take down the magnetic ring by hand.



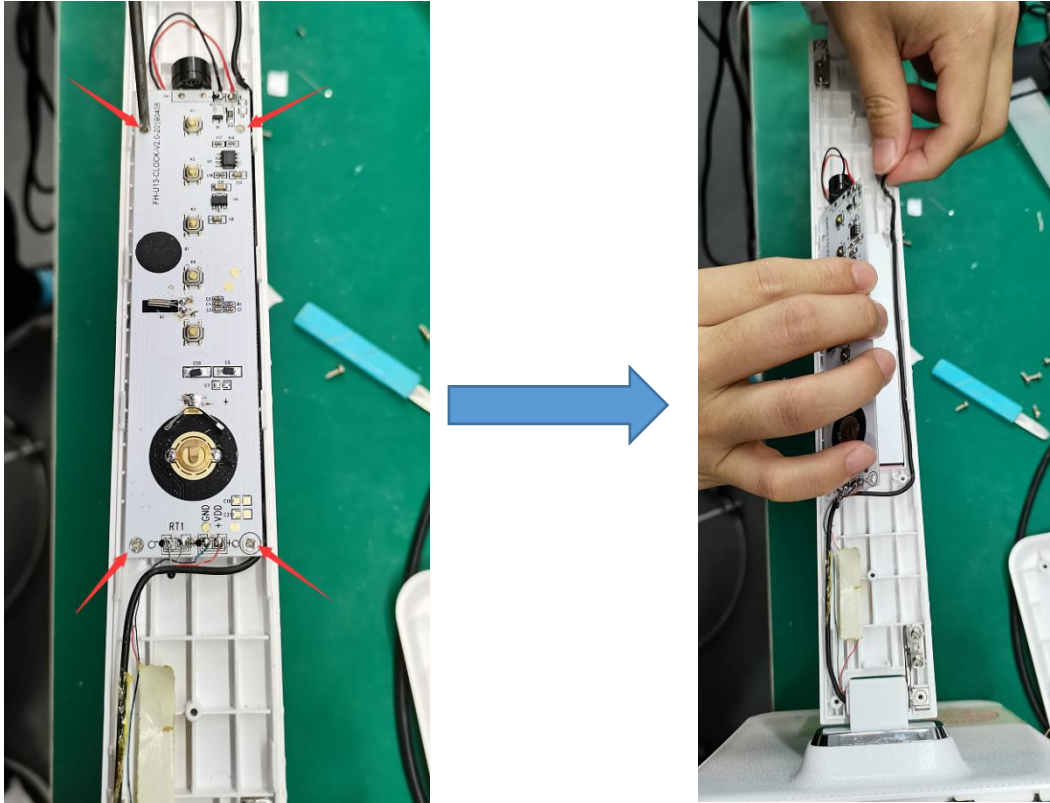
Step7: Remove the 4 screws of lamp-post with the screwdriver(PH0x75mm).



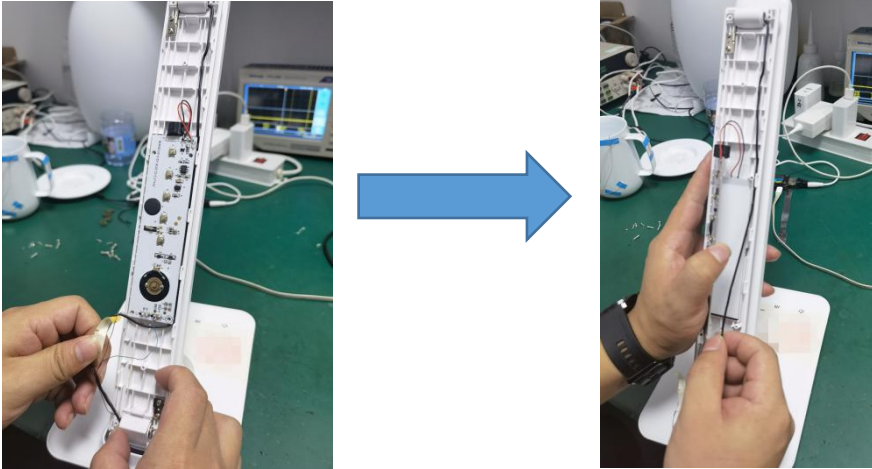
Step8: Pry the shell of lamp-post off directly with the pry piece.



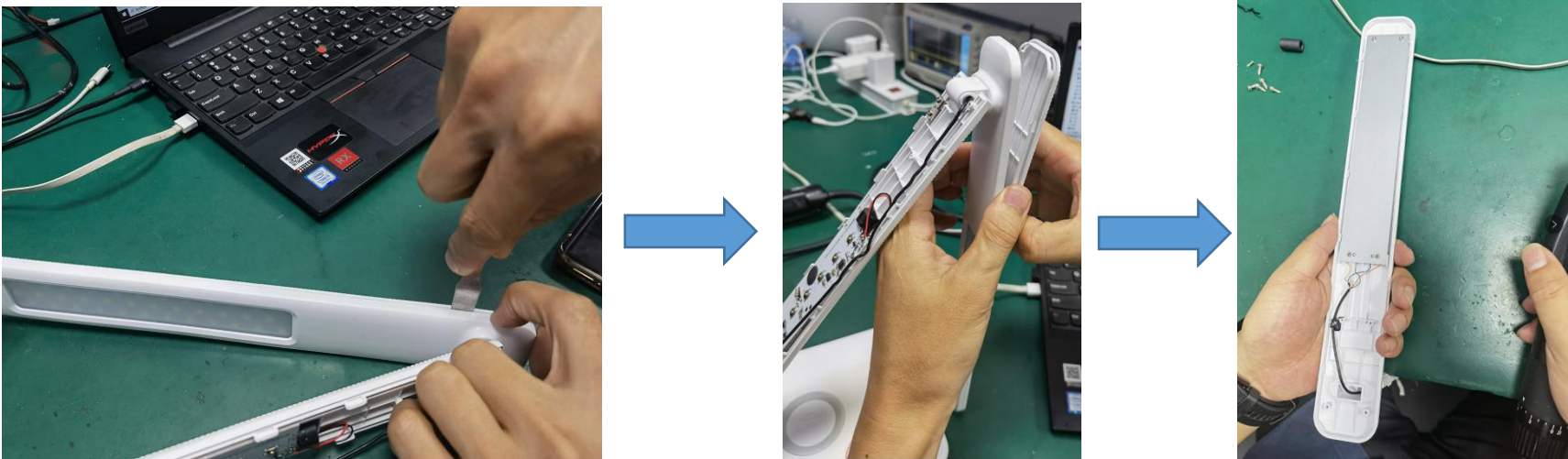
Step9: Remove the 4 screws on Clock PCB board with the screwdriver(PH0x75mm).



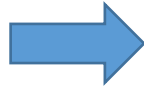
Step10: Pull out the black line.



Step11: Pry the shell of lamp hold off directly with the pry piece.



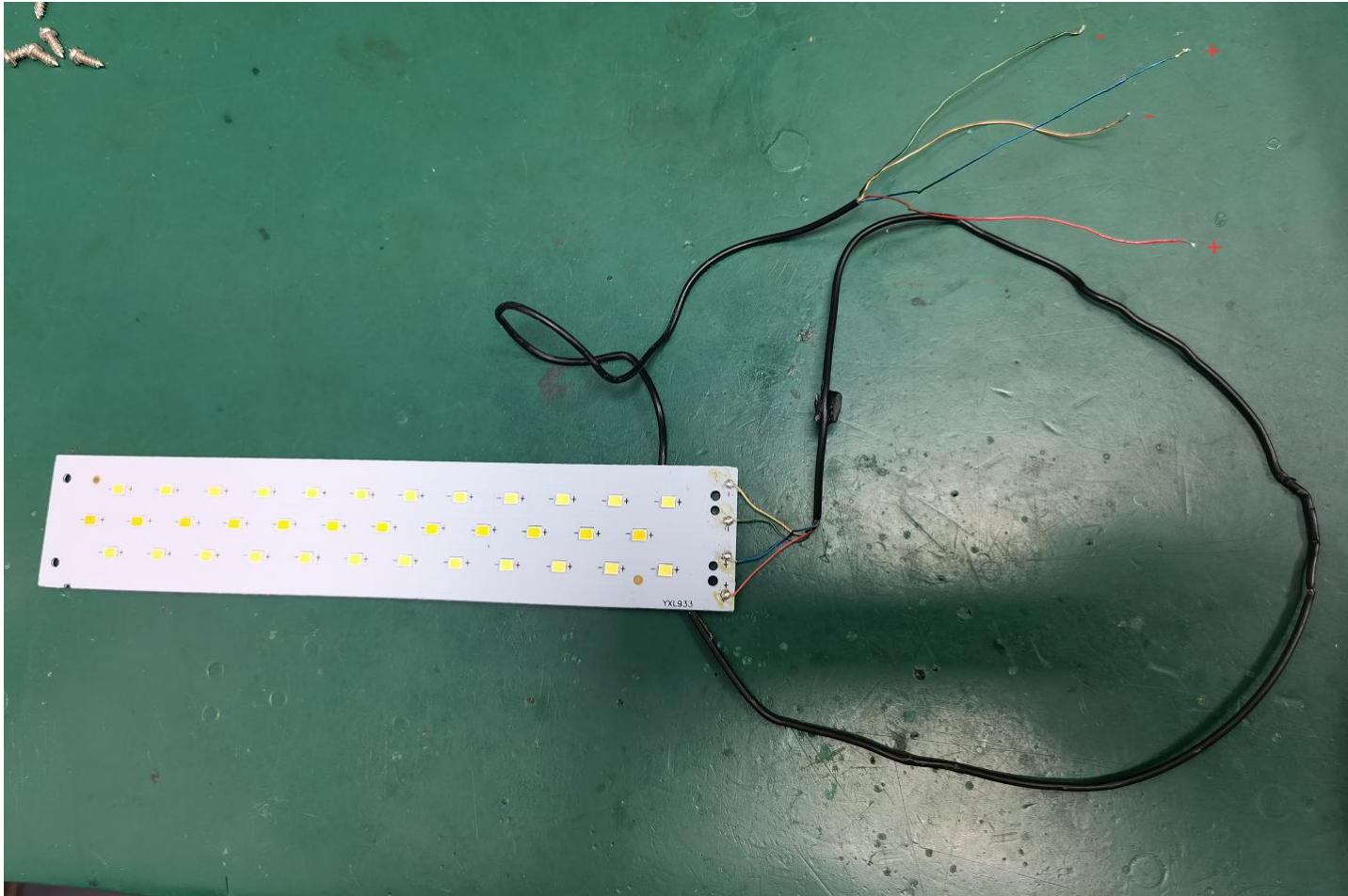
Step12: Remove the 4 screws on lamp holder with the screwdriver(PH0x75mm).



Step13: Pull out the black line.



Step14: Now the light source was removed without being permanently damaged for verification purposes.



Red/Blue line: Positive pole “ + ”

Green/Yellow line: Negative pole “ - ”