

Product details:

Item No.: 825577

Model No.: U11

Technical data:

Input:5V/1A

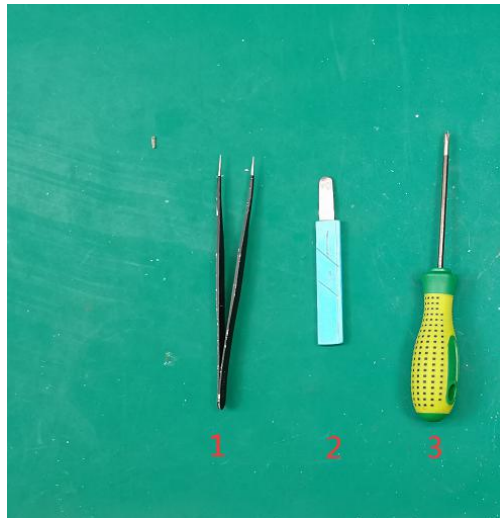
CCT: 4000K

Luminous flux: 200Lm

Lighting power: 5W

CRI: 80Ra

Tools list:



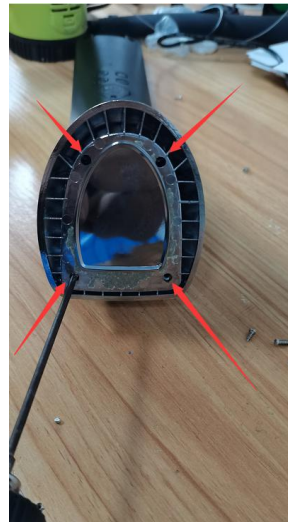
- 1: Tweezers
- 2: Pry piece
- 3: Screwdriver(PH0x75mm)

Instructions on how to remove the light source:

Note: Please operate following steps when the product is powered off.



Step1: Remove the sponge pad on bottom by hand.



Step2: Remove the 4 screws with the screwdriver(PH0x75mm).

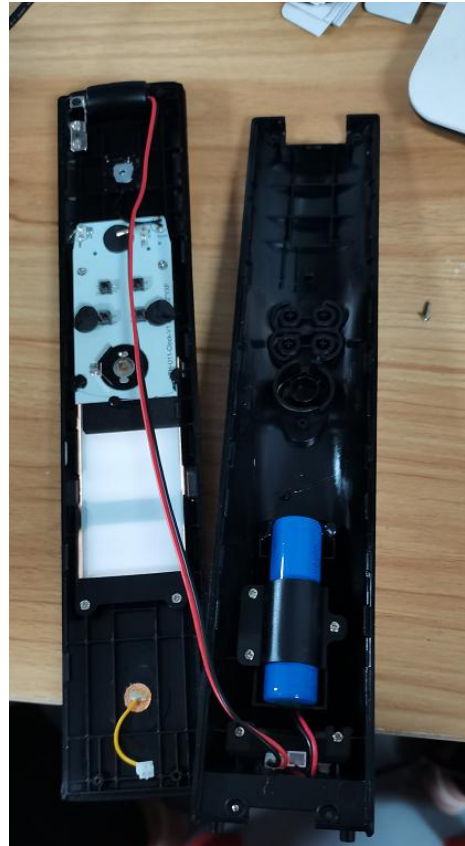


Step3: Remove the 2 screws with the screwdriver(PH0x75mm).

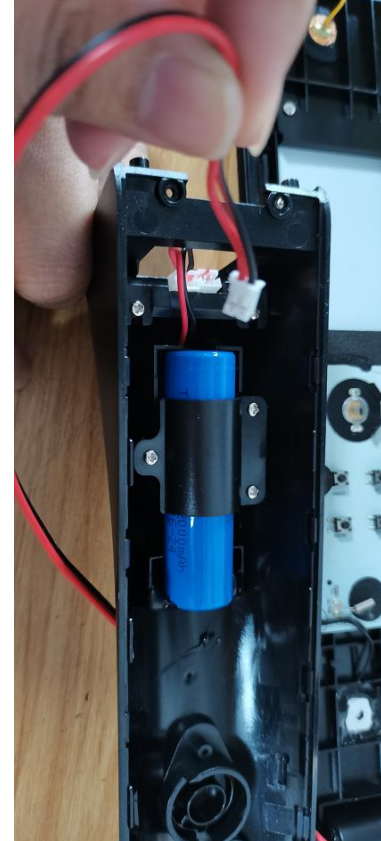
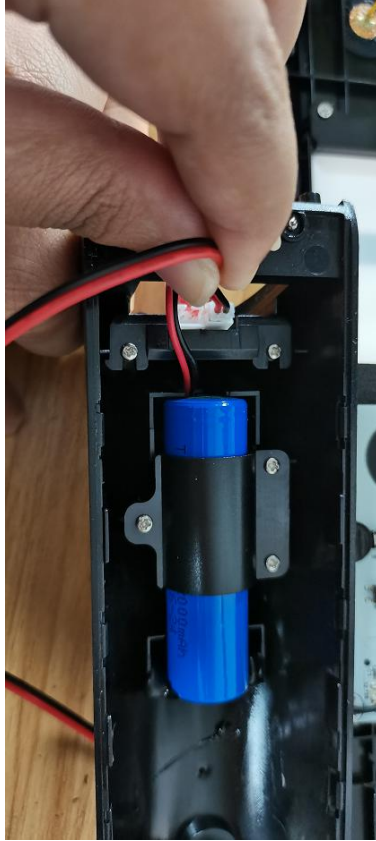
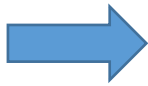
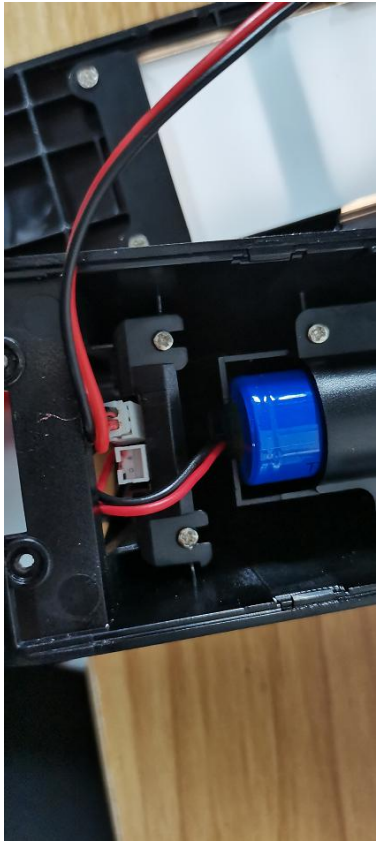


Step4: Remove the 2 screws on lamp-post with the screwdriver(PH0x75mm).

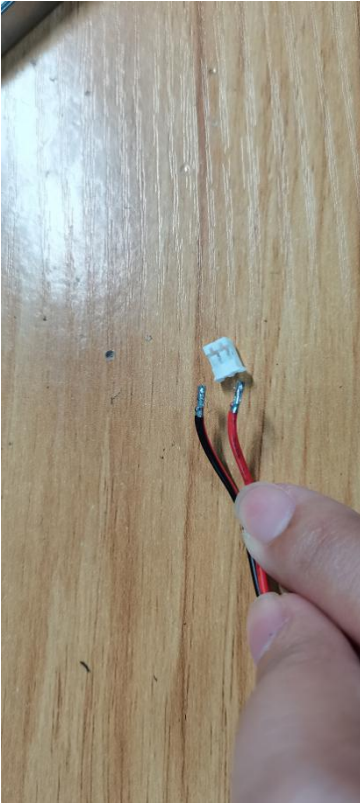
Step5: Pry the shell of lamp-post off directly with the pry piece.



Step6: Use hands to separate below white terminals.



Step7: Use tweezers to remove the white terminals.



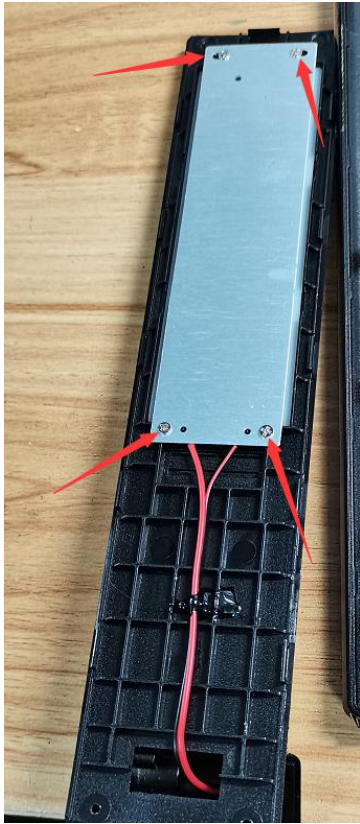
Step8: Remove the 2 screws with the screwdriver(PH0x75mm).



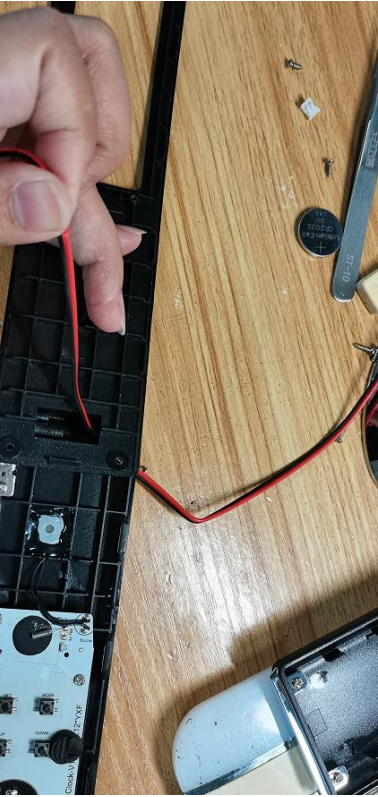
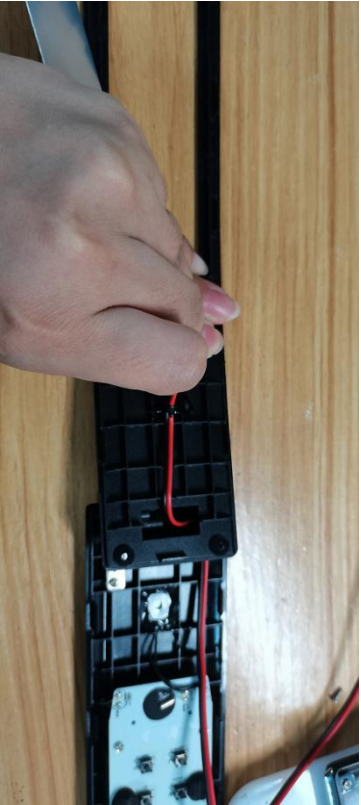
Step9: Pry the shell of lamp holder off directly with the pry piece.



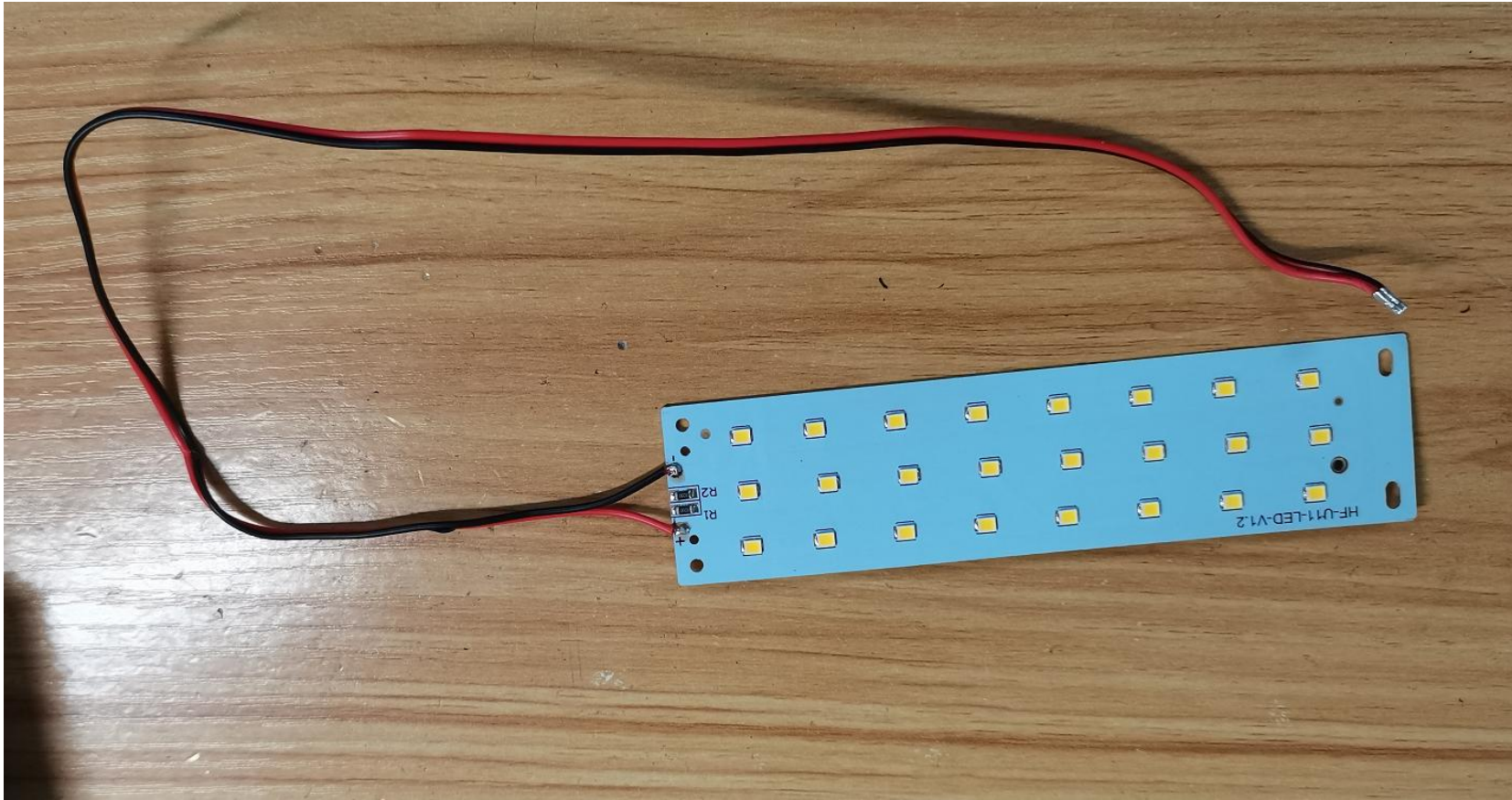
Step10: Remove the 4 screws on LED PCB board with the screwdriver(PH0x75mm).



Step11: Pull out the line.



Step12: Now the light source was removed without being permanently damaged for verification purposes.



Red line: Positive pole “ + ”
Black line: Negative pole “ - ”