

Product details:

Item No.: 825578

Model No.: F3Q

Technical data:

Input:12V/1A

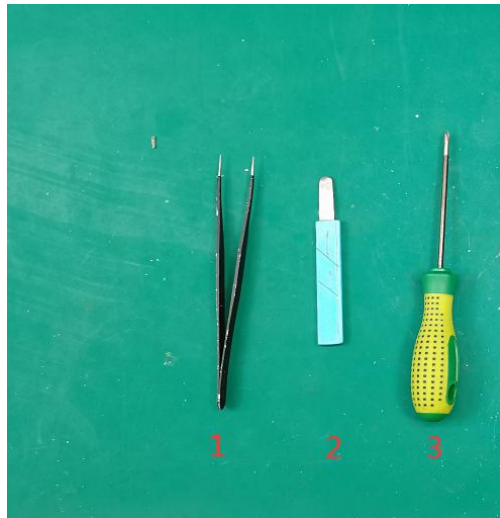
CCT: 3000/4200/5500K

Luminous flux: 200Lm Max.

Lighting power: 3W Max.

CRI: 80Ra

Tools list:

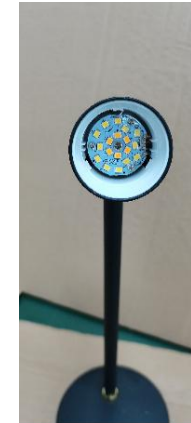


- 1: Tweezers
- 2: Pry piece
- 3: Screwdriver(PH0x75mm)

Instructions on how to remove the light source:

Note: Please operate following steps when the product is powered off.

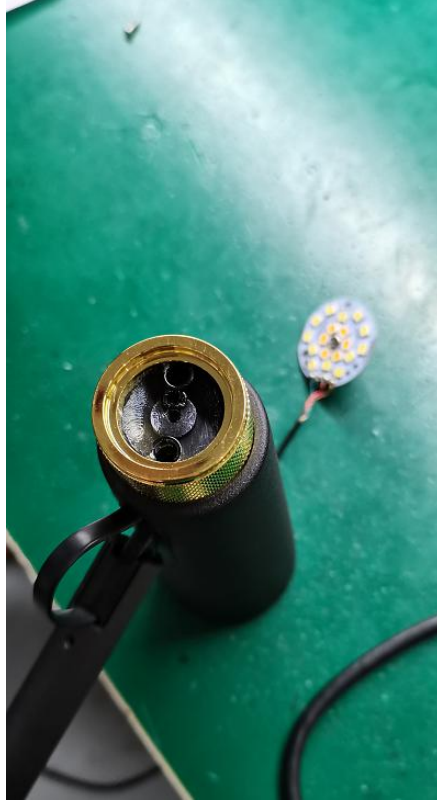
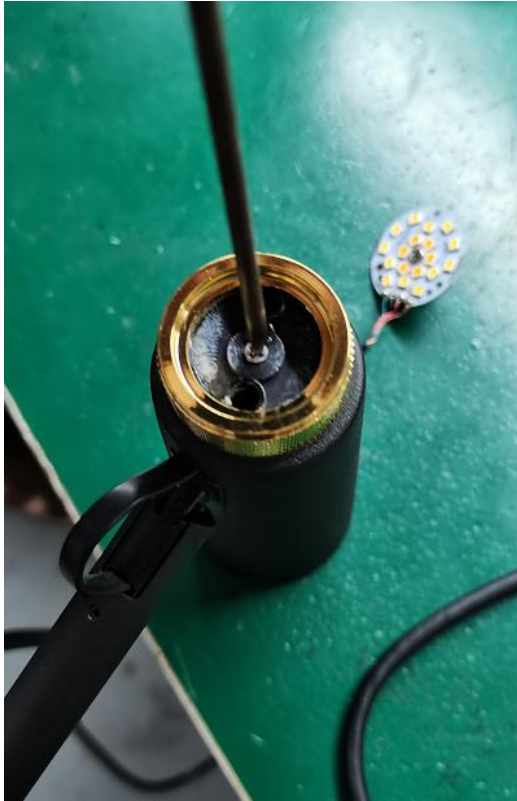
Step1: Pry the lampshade off directly with the pry piece.



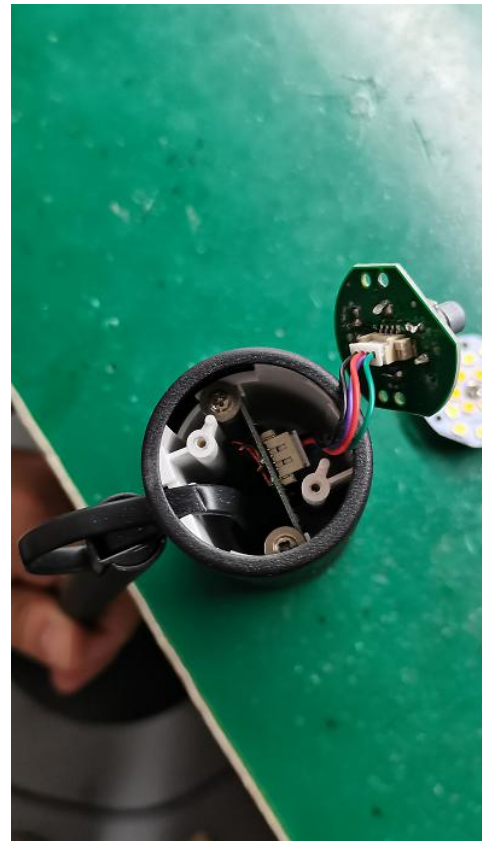
Step2: Remove the 3 screws with the screwdriver(PH0x75mm).



Step3: Remove the screw with the screwdriver(PH0x75mm) then remove the golden part.



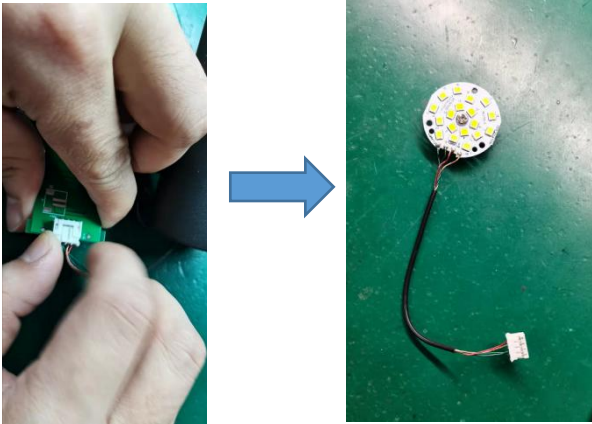
Step4: Remove the 2 screws with the screwdriver(PH0x75mm).



Step5: Remove the 2 screws with the screwdriver(PH0x75mm).



Step6: Use hands to separate the white terminals from the PCB board.



Step7: Use tweezers to remove the white terminals.



Step8: Now the light source was removed without being permanently damaged for verification purposes.



Red/Blue line: Positive pole “ + ”

Green/Orange line: Negative pole “-”