

## Product details:

Item No.: 825674

Model No.: F3F

Technical data:

Input: 12V/0.5A

CCT: 3000/4200/5000K

Luminous flux: 300Lm Max.

Lighting power: 6.2W Max.

CRI: 80Ra

## Tools list:

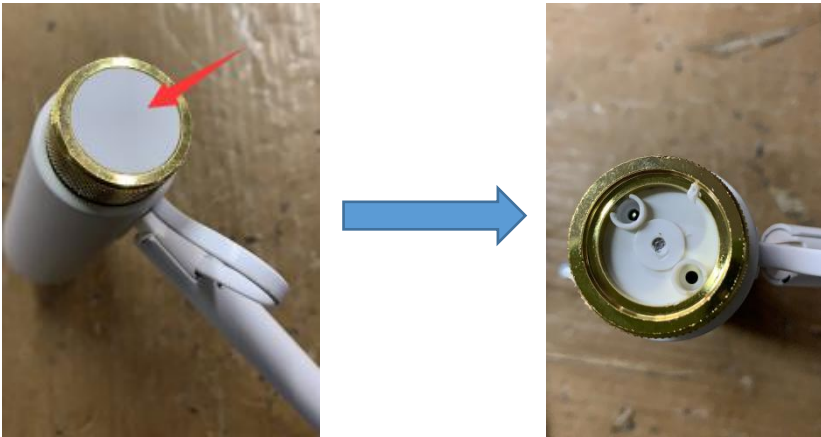


- 1: Hexagon wrench
- 2: Screwdriver(PH1x150mm)
- 3: Tweezers

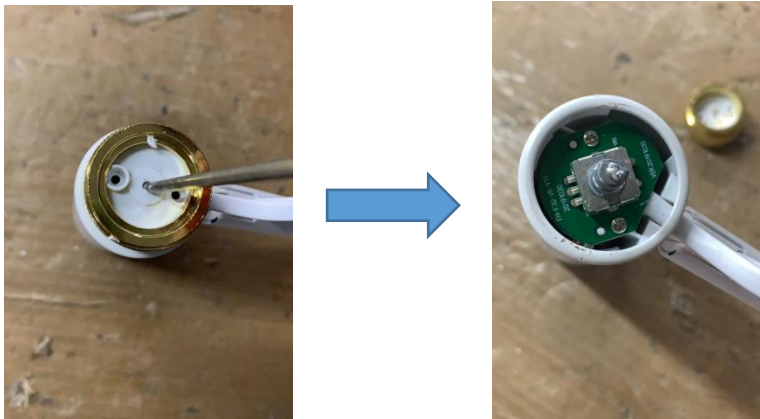
## **Instructions on how to remove the light source:**

Note: Please operate following steps when the product is powered off.

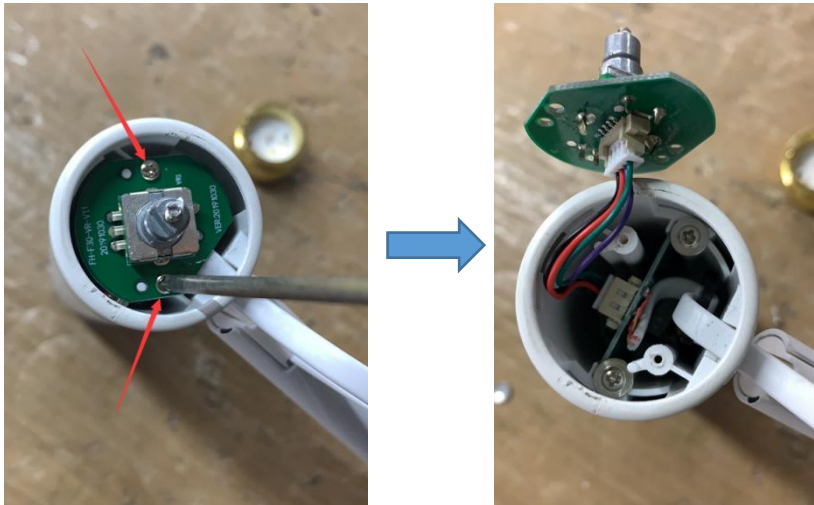
Step1: Remove below white part.



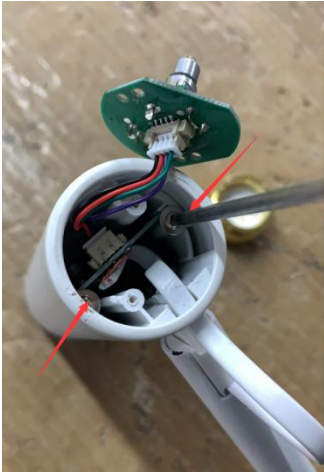
Step2: Remove the screw with the screwdriver(PH0x75mm) then remove the golden part.



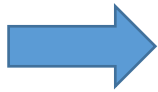
Step3: Remove the 2 screws with the screwdriver(PH0x75mm).



Step4: Remove the 2 screws with the screwdriver(PH0x75mm).



Step5: Remove the screw with the screwdriver(PH0x75mm) to separate the inner&outer shell of lamp holder .



Step6: Remove the screw on inner shell of lamp holder with a hexagon wrench.



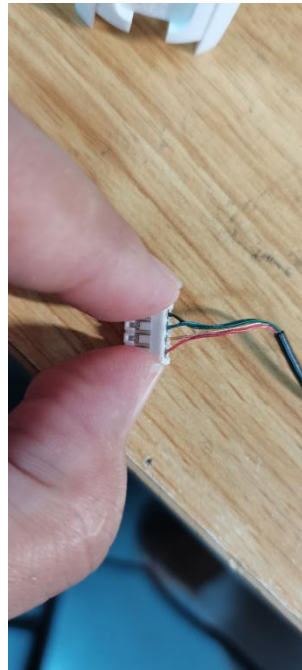
Step7: Push hexagon wrench through the hole and gently tap the lampshade to peel it off.



Step8: Remove the 3 screws with the screwdriver(PH0x75mm).



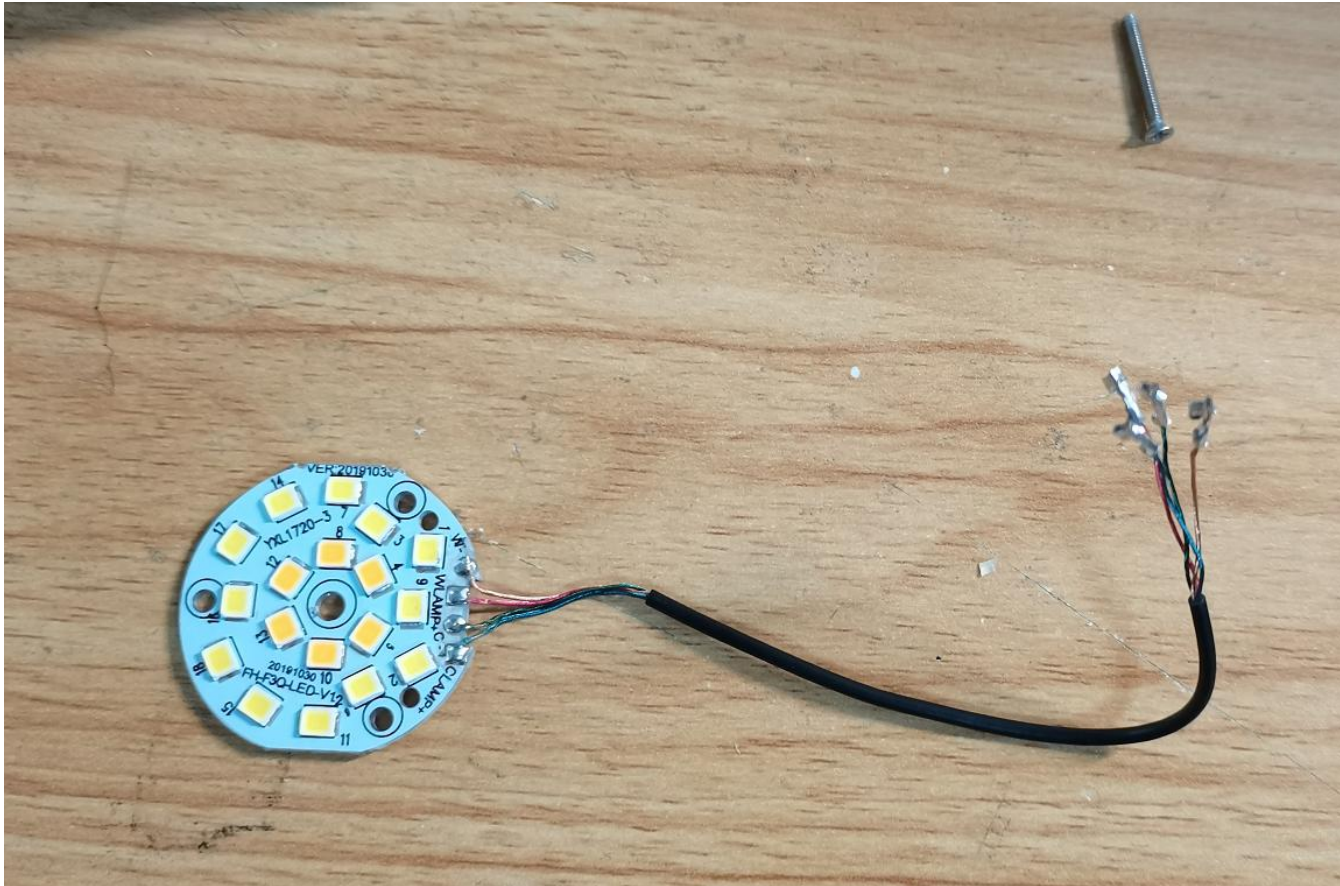
Step9: Use hands to separate the white terminals from the PCB board.



Step10: Use tweezers to remove the white terminals.



Step11: Now the light source was removed without being permanently damaged for verification purposes.



Red/Green line: Positive pole “ + ”  
Blue/Orange line: Negative pole “-”