

Product details:

Item No.: 844180

Model No.: ZD3

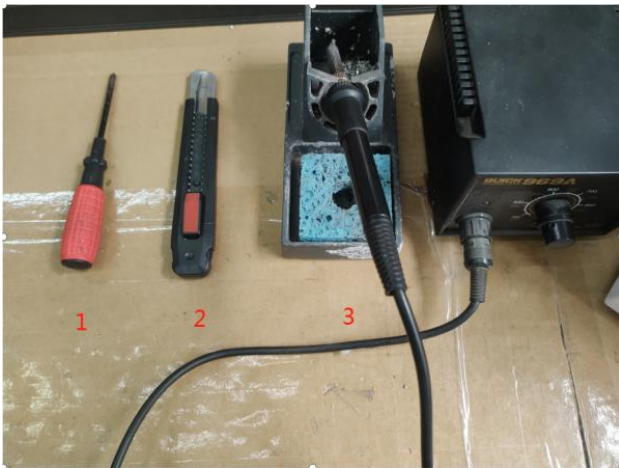
Technical data:

Input: 12V/1A

CCT: 3000K

CRI: 80Ra

Tools list:

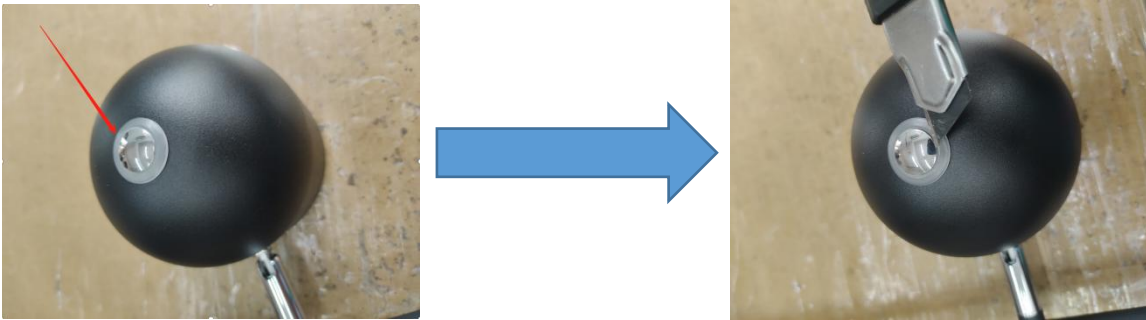


1. Screwdriver
2. Utility knife
3. Soldering iron

Instructions on how to remove the light source:

Note: Please operate following steps when the product is powered off.

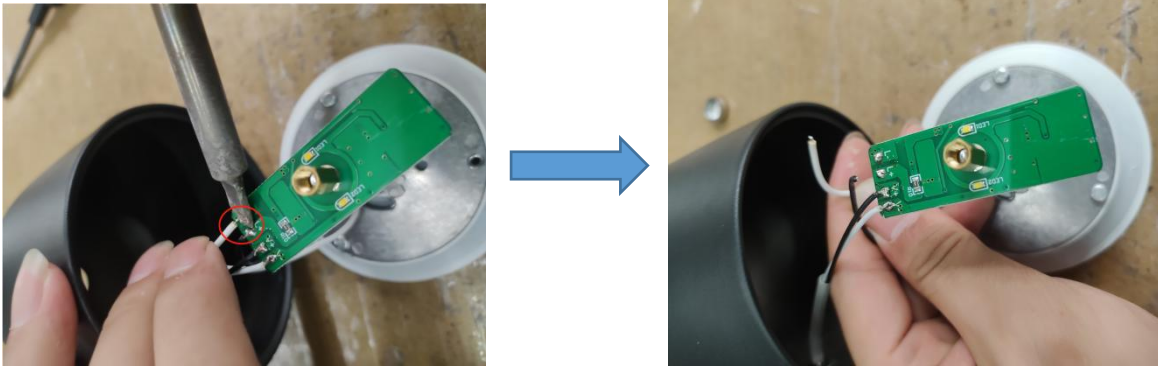
Step1: Use utility knife to pry off the decorating part of lamp head.



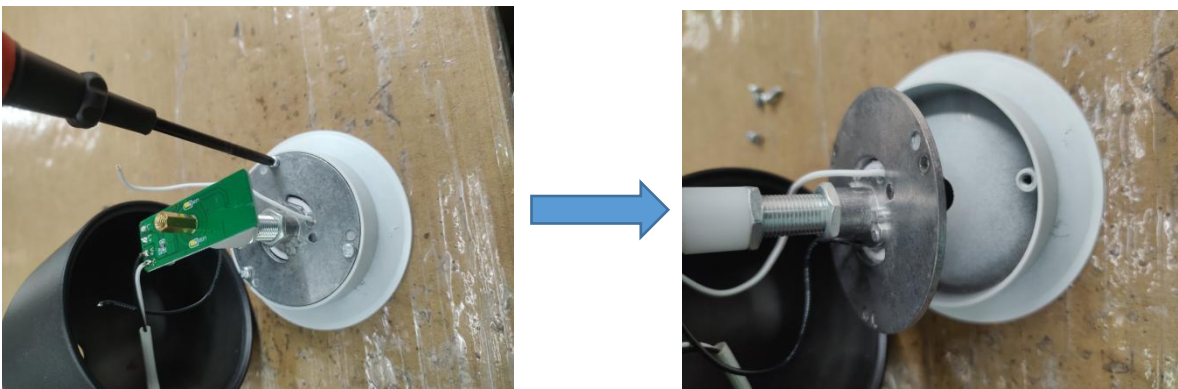
Step2: Turn the screwdriver counterclockwise, remove the screw and rubber ring, then take down the white lampshade at the lamp head.



Step3: Use soldering iron to remove the positive and negative wires(connected to the lamp board) on the PCB board.



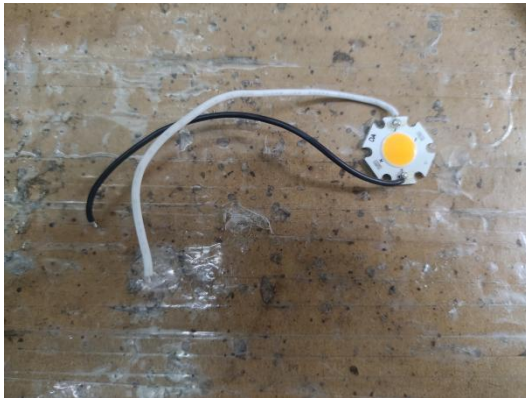
Step4: Use screwdriver to remove the screw on support of white lampshade by counterclockwise.



Step5: Turn the lampshade bracket to see the light source, and gently pull it off



Step6: Now the light source was removed without being permanently damaged for verification purposes.



Black line: Positive pole “ + ”

White line: Negative pole “-”