

Product details:

Item No.: 844343

Model No.: W49

Technical data:

Input:5V/2A

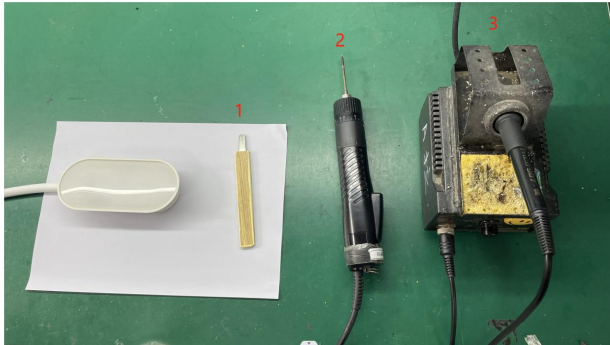
CCT: 2700-3200K/3500-4100K/4600-5100K

Luminous flux: 320-380Lm Max.

Lighting power: 8.2-9.8W Max.

CRI: 80Ra

Tools list:

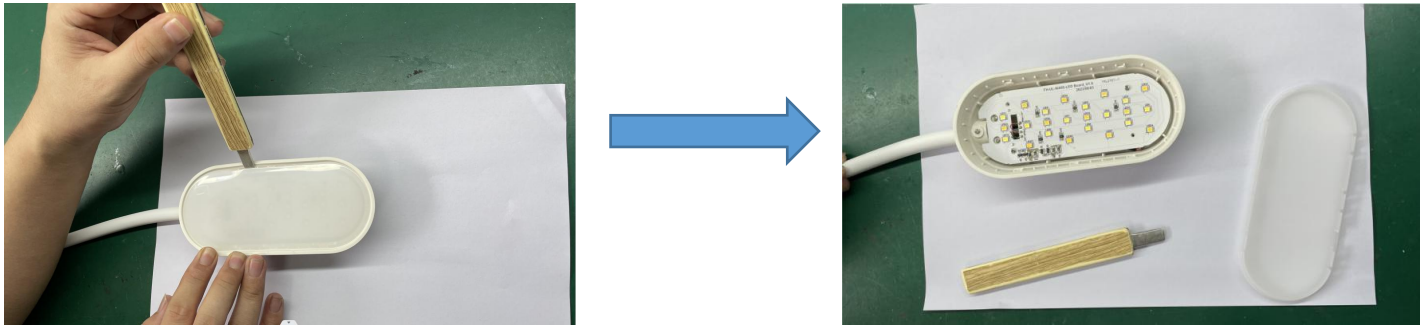


1. Pry piece
2. Electric screwdriver
3. Soldering iron

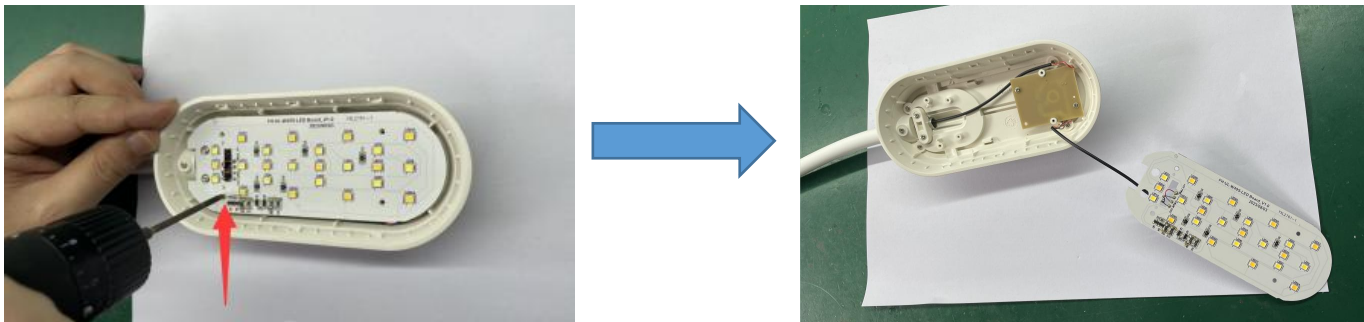
Instructions on how to remove the light source:

Note: Please operate following steps when the product is powered off.

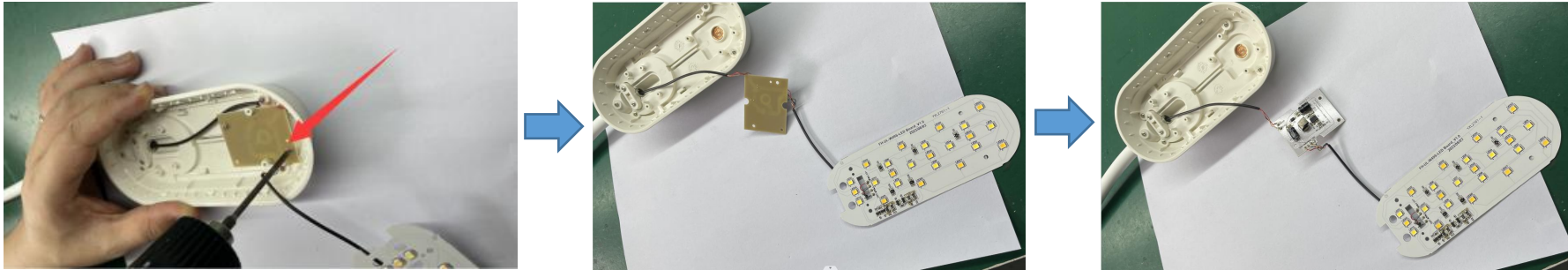
Step1: Use Pry piece to insert it along the edge of the lampshade to pry it off.



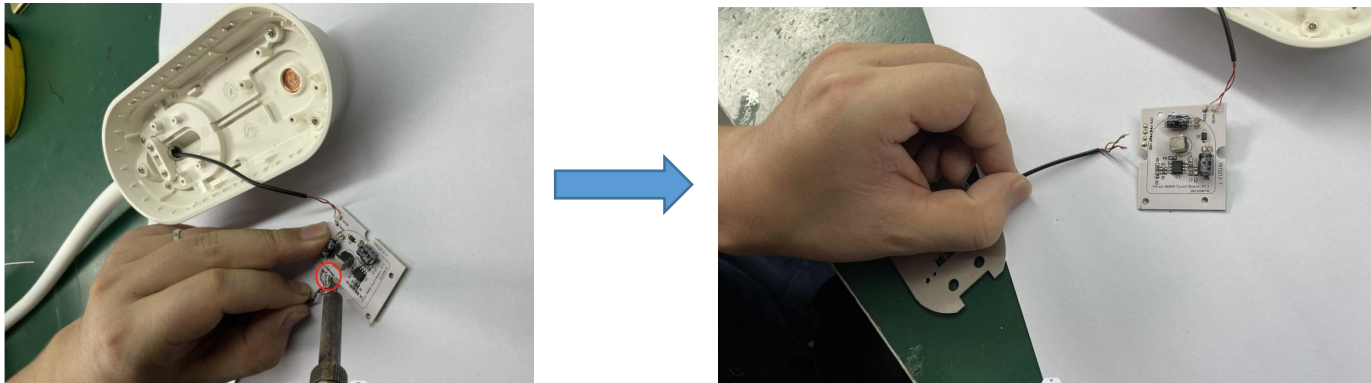
Step2: Remove the screws on the lamp board with Electric screwdriver.



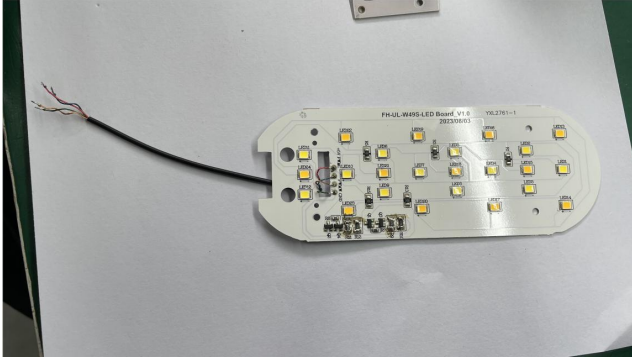
Step3: Remove the screws on the touch board with Electric screwdriver.



Step4: Use soldering iron to remove the positive and negative wires connected to touch board.



Step5: Now the light source was removed without being permanently damaged for verification purposes.



Red&Blue line: Positive pole “ + ”

Golden&Green line: Negative pole “ - ”